

OWINGS-DEWEY FINE ART



OWINGS-DEWEY FINE ART
gallery selections

OWINGS-DEWEY FINE ART
Santa Fe, New Mexico



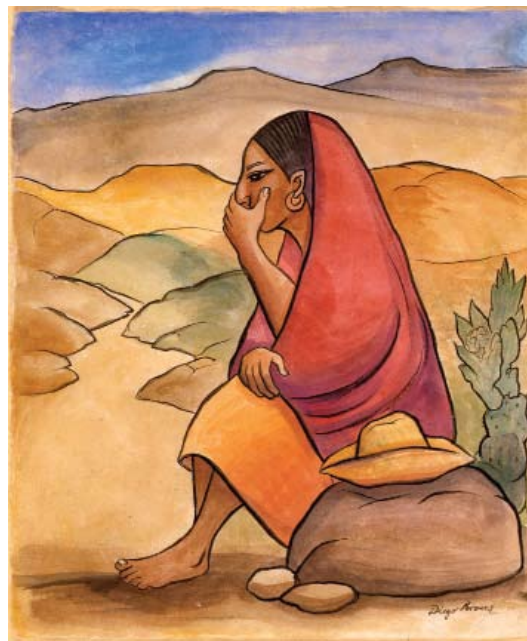
Dorothy Brett (1883-1976) *Pueblo Madonna*, d. 1932, oil on canvas, 38 x 27 inches

Dorothy Brett (1883-1976) *Foot Races, San Geronimo Feast Day, Taos*
d. 1924-1965, oil on canvas, 47 3/8 x 53 1/2 inches (right)





Walter Ufer (1876-1936) *Fructuations*, c. 1920, oil on canvas, 25 x 30 inches



Diego Rivera (1886-1957) *Indian Girl*, watercolor on paper, 14 1/2 x 12 1/4 inches



John Marin (1877-1943) *The Tree, New Mexico*, d. 1929, watercolor on paper, 15 x 18 7/8 inches



Arthur Dove (1880-1946) *Along the Pier*, watercolor on paper, 5 x 7 inches



John Marin (1877-1943) *Woolworth Building*, graphite on paper, 9 5/8 x 7 5/8 inches



Richard Diebenkorn (1922-1993) *Untitled, Ocean Park*, d. 1974, acrylic on paper, 28 7/8 x 21 1/8 inches



Willard Nash (1898-1934) *Springtime-Santa Fe*, d. 1923, oil on canvas, 20 x 24 inches



Andrew Dasburg (1887-1979) *Autumn, New Mexico*, oil on canvas, 24 1/8 x 30 1/8 inches



Victor Higgins (1884-1949) *Sunlit Trees*, oil on canvas, 22 1/4 x 29 1/4 inches

Victor Higgins (1884-1949) *Gateway*, c. 1946-1949, oil on canvas, 30 x 30 inches (left)



Gerald Delano (1890-1972) *Desert Travelers*, watercolor on paper, 18 x 24 inches



Oscar Berninghaus (1874-1952) *Feeding the Horses, New Mexico*, oil on canvas, 9 x 13 inches



William R. Leigh (1866-1955) *The Maiden*, d. 1912, oil on canvas, 10 x 13 inches



Oscar Berninghaus (1874-1952) *Ignacio Train Depot*, c. 1900, oil on canvas, 9 x 13 inches



Carlos Vierra (1876-1936) *Cottonwoods-Alcade*, oil on board, 18 x 24 inches

E. Martin Hennings (1886-1956) *Riverside, Early Autumn*, oil on canvas, 30 x 30 inches (right)





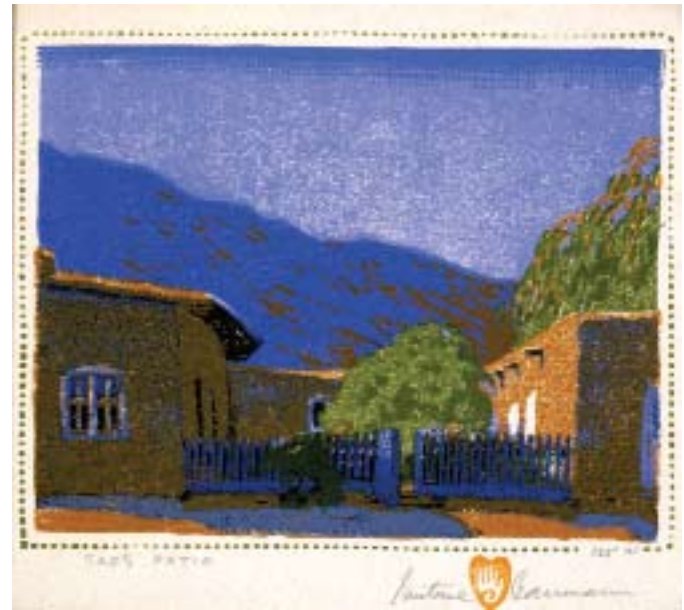
Fremont Ellis (1897-1985) *House on the Acequia*, oil on canvas, 18 x 24 inches



Fremont Ellis (1897-1985) *Autumn, Cienega*, oil on canvas, 22 x 30 inches



Gustave Baumann (1881-1971) *Aspen Money*, color woodblock print, 13 3/4 x 13 3/4 inches



Gustave Baumann (1881-1971) *Taos Patio*, color woodblock print, 7 x 8 1/4 inches



Gustave Baumann (1881-1971) *Tulips*, color woodblock print, 13 x 13 inches



Gustave Baumann (1881-1971) *Procession*, color woodblock print, 14 x 14 inches



Rebecca S. Strand (1891-1968) *Tom Boy's Lamb*, d. 1934, reverse painted glass, 8 x 10 inches



Oscar Bluemner (1867-1938) *The Scales House, Soho*, d. 1920, graphite and gouache on paper, 3 1/8 x 4 inches



Ed Mell (b.1942) *Cloud Matrix*, oil on linen, 20 x 24 inches



Ed Mell (b. 1942) *Desert Diamond*, oil on linen, 40 x 30 inches

This catalogue was published to accompany the exhibition:
OWINGS-DEWEY FINE ART
gallery selections

April 24 through May 23, 2009

Owings-Dewey Fine Art

76 East San Francisco Street, Santa Fe, New Mexico 87501

Telephone: 505.982.6244

Fax: 505.983.4215

Web: www.owingsdewey.com

Email: info@owingsdewey.com

Publication © 2009 Owings-Dewey Fine Art

All rights reserved. No part of this catalogue may be reproduced
without the written permission of Owings-Dewey Fine Art

Catalogue Design: Laura C. Widmar, Santa Fe, New Mexico

On the Front and Back Cover: Dorothy Brett (1883-1976)

Foot Races, San Geronimo Feast Day, Taos d. 1924-1965, oil on canvas

47 3/8 x 53 1/2 inches

3200 Copies

Printed in Canada